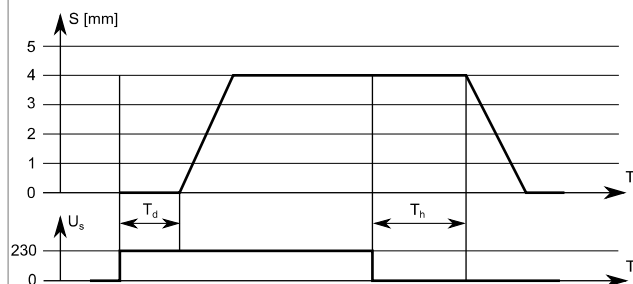


THERMAL ACTUATOR BA2005

BA2005 thermal actuators are designed for controlling control valves in HVAC automation systems. The thermal actuator can be controlled by 230 Vac on/off control signal or PWM signal.

The following figure illustrates the function principles of the BA2005 thermal actuators.



S = stroke
 U_s = supply voltage
 T = time
 T_d = dead time
 T_h = hold time

NOTE: Do not use ammoniac materials or glues near the BA2005 thermal actuators.

BA2005 thermal actuators are mounted to the NV2 control valves by using a VA 80 adapter ring. Special adapter rings are also available for other valve manufacturers' valves.

BA2005 thermal actuators are delivered in "First open" status which leaves the valve a bit open after actuator assembly. This allows the system filling and flushing even if the control system is not yet functioning. The actuator set to normal operation after the actuator is connected to the supply voltage for at least 6 minutes. You cannot activate the "First open" function again.



Technical data:

Supply	230 Vac (207...253 V)
Power consumption	1,8 W
Operating current	8 mA
Start-up current	300 mA (max. 200 ms)
Force	95...105 N
Stroke	4 mm
Running time	approx. 3 min (close/open)
De-energized position	closed (NC)
Mounting	by using an adapter ring (sold separately)
Ambient temperature	0...60 °C
Housing	IP54, polyamide

Wiring:

Blue	0 V
Brown	230 V

Ordering guide:

Model	Product number	Description
BA2005	1210030	thermal actuator 230 V, NC, removable cable (sold separately)
BA-ALL.5.2.01	1220021	removable cable, 1 m
BA-ALL.5.2.02	1220022	removable cable, 2 m
BA-ALL.5.2.03	1220023	removable cable, 3 m
BA-ALL.5.2.04	1220024	removable cable, 4 m
BA-ALL.5.2.05	1220025	removable cable, 5 m
BA-ALL.5.2.10	1220026	removable cable, 10 m
BA-ALL.5.2.15	1220027	removable cable, 15 m
BA-ALL.5.2.20	1220028	removable cable, 20 m

Products fulfill the requirements of directive 2004/108/EY and are in accordance with the standards EN61000-6-3 (Emission) and EN61000-6-2 (Immunity).